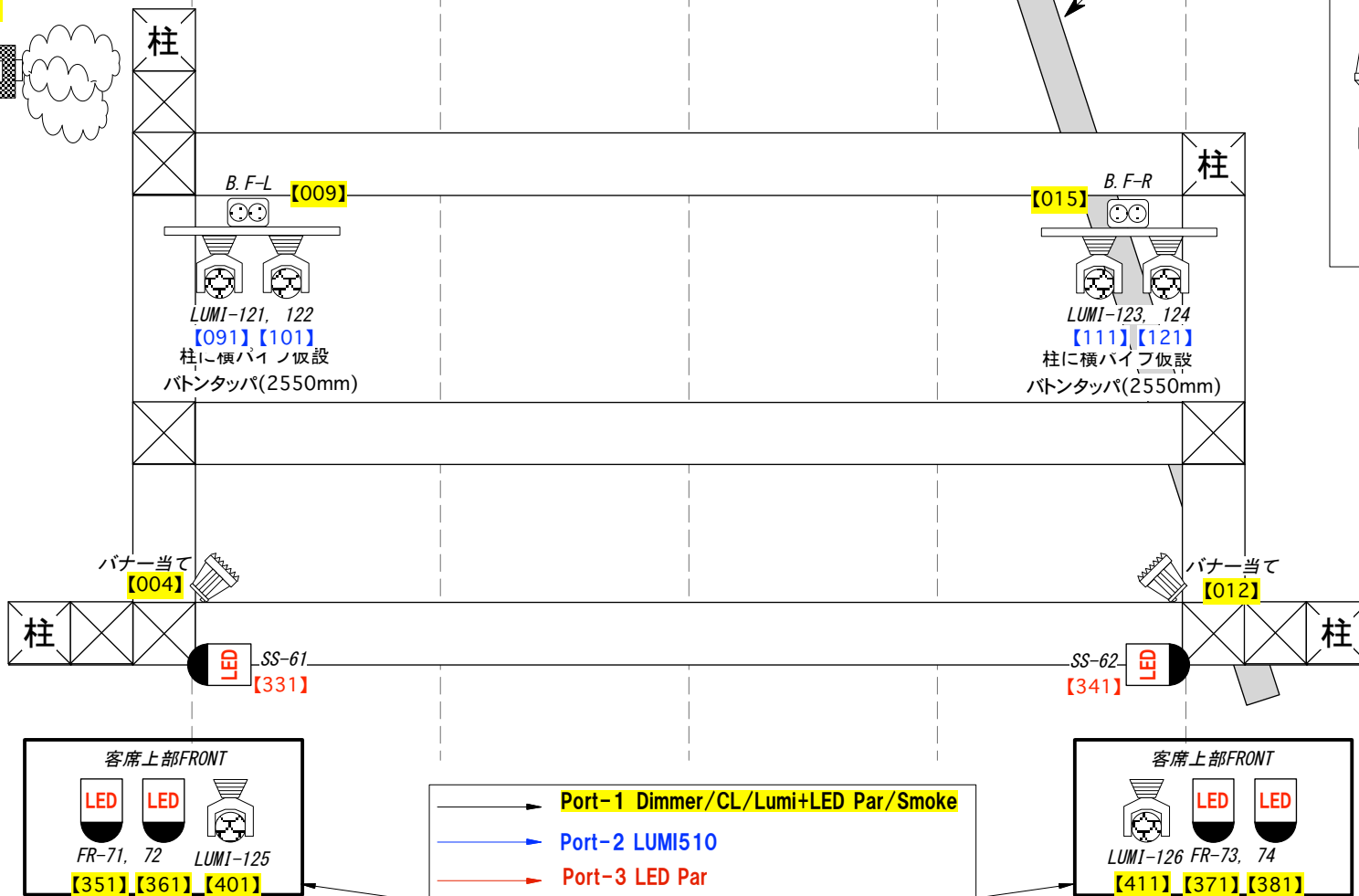
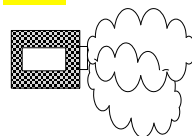


ANTARI Z-1500 II
卓制御 **[512]**



Key	
	Lumi510×15 (265w)
	Led Par×29 (260w)
	ITO×10 (650w)
	FQ×1 (1.5kw)
	2MB×4 (1kw)
	Qsp×4 (500w)

客席上部FRONT

FR-71, 72 LUMI-125
[351], [361], [401]

Port-1 Dimmer/CL/Lumi+LED Par/Smoke
Port-2 LUMI510
Port-3 LED Par

客席上部FRONT

LUMI-126 FR-73, 74
[411], [371], [381]

※FRのLUMIはフロントステージ向き

高松festhalle stage+CL
2019. 04/20ver