

LUMI 510 (2.65A) Fixture Data

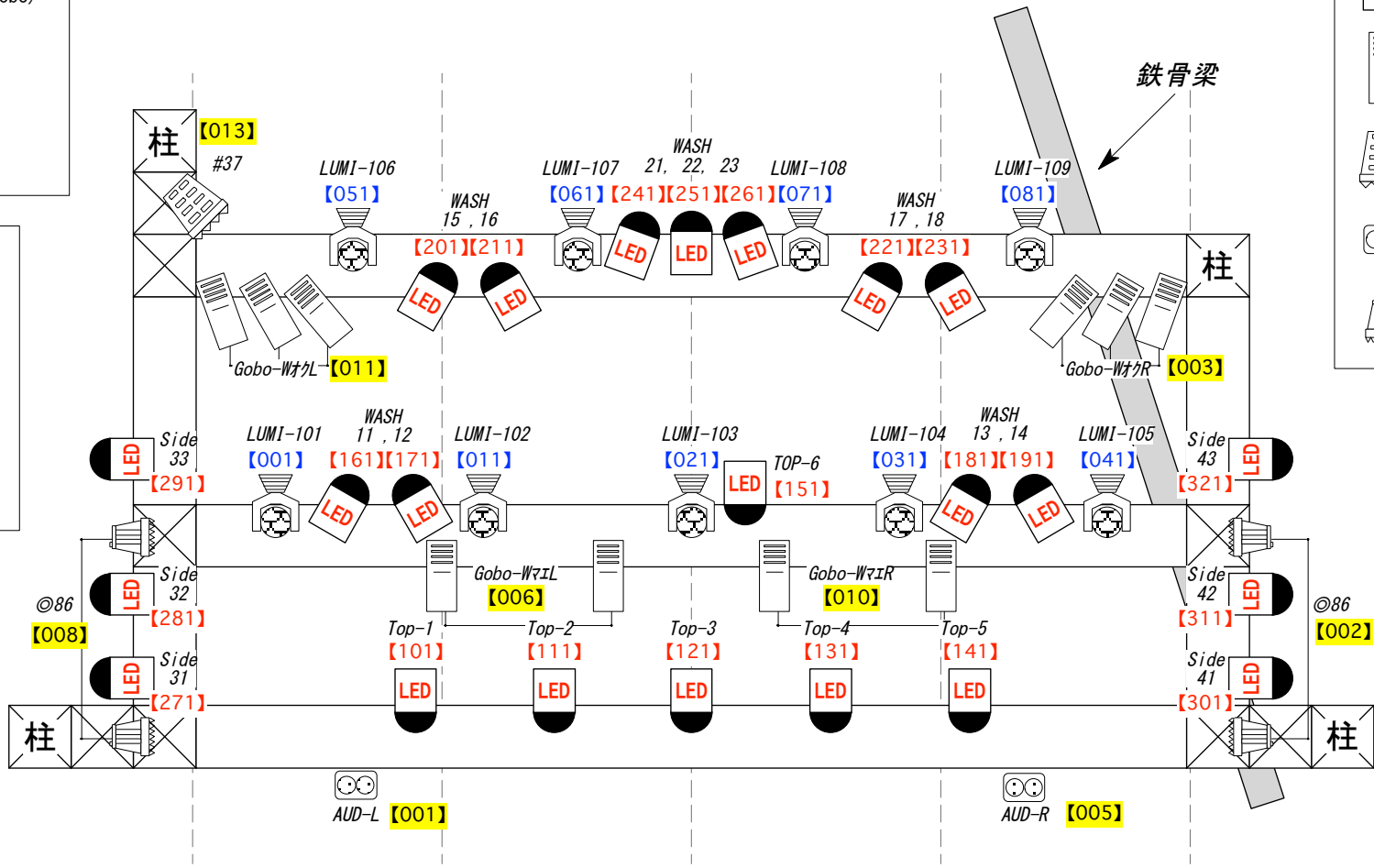
1. R
2. G
3. B
4. CTO
5. Shutter, Reset  
 (1-15 open)  
 (16-47 Random storobo)  
 (48-239 strobo)  
 (240-247 open)  
 (248-251 reset)  
 (252-255 open)
6. Dimmer
7. Pan
8. Tilt
9. Pan Fine
10. Tilt Fine

CORVO LED PAR (2.6A) Fixture Data 8ch Mode

1. Dimmer
2. R
3. G
4. B
5. W
6. Strobo
7. Zoom
8. Fan  
 (0 自動)  
 (1-127 徐々にFL)  
 (128-255 強制停止)

Key

- Lumi510×15 (265w)
- Led Par×29 (260w)
- ITO×10 (650w)
- FQ×1 (1.5kw)
- 2MB×4 (1kw)
- Qsp×4 (500w)



Port-1 Dimmer/CL/Lumi+LED Par/Smoke  
 Port-2 LUMI510  
 Port-3 LED Par